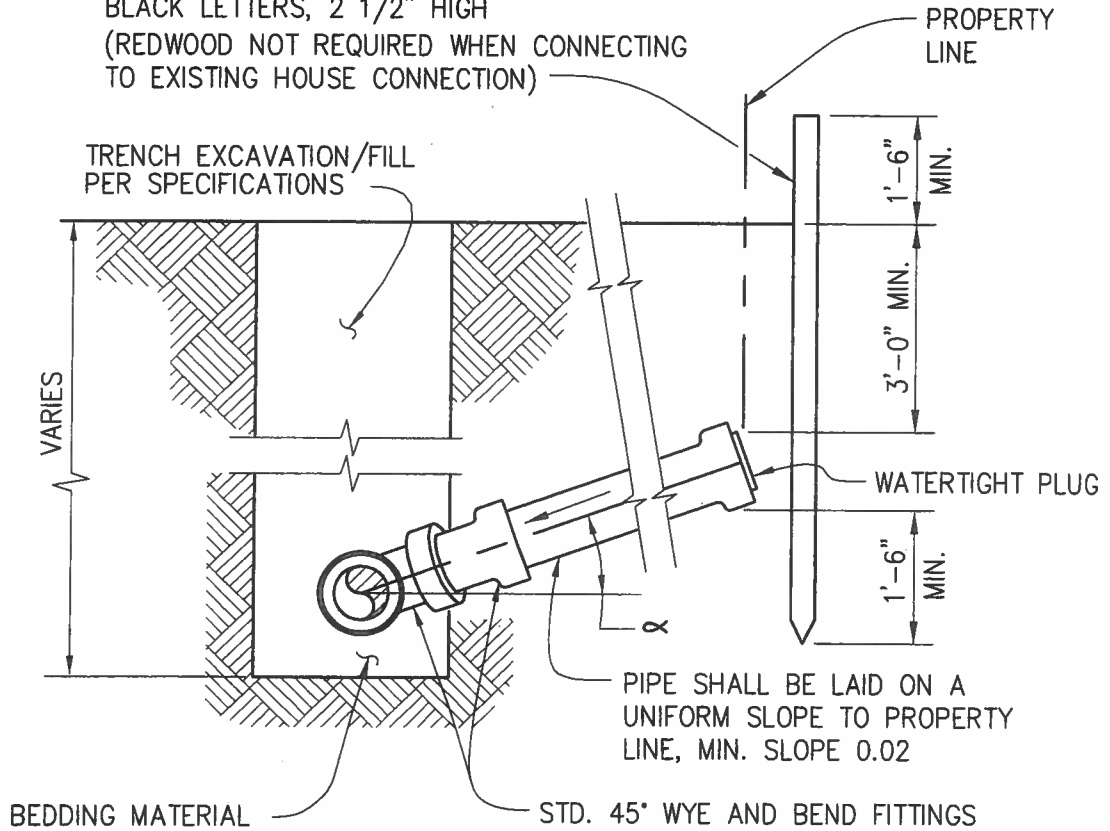


LATERAL

TEMPORARY REDWOOD (2"x4") PAINTED WHITE WITH THE WORD "LATERAL" PAINTED IN BLACK LETTERS, 2 1/2" HIGH
(REDWOOD NOT REQUIRED WHEN CONNECTING TO EXISTING HOUSE CONNECTION)



SECTION

NTS

NOTES:

1. PIPE SHALL BE HIGH STRENGTH VCP OR PVC SEWER PIPE.
2. CONTRACTOR SHALL MARK A 2" HIGH "S" ON THE CURB FACE AT ALL SEWER LATERALS.



CITY OF SANTA PAULA - PUBLIC WORKS DEPARTMENT

STANDARD PLAN

SERVICE LATERAL

203

APPROVED BY:


Clifford G. Finley
PUBLIC WORKS DIRECTOR / CITY ENGINEER

2-2-09

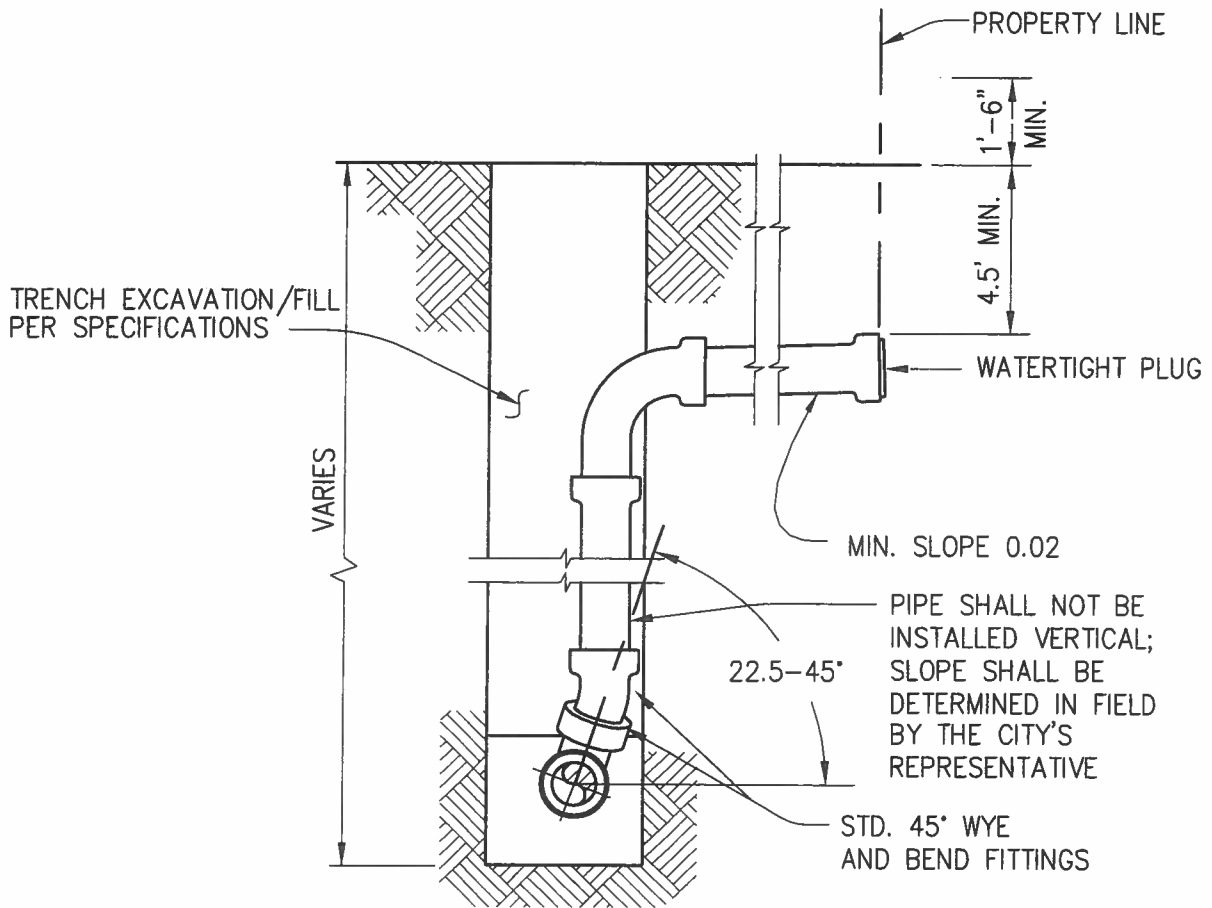
DATE

SHEET 1 OF 3

1. $10^\circ < \alpha < 30^\circ$, USE STANDARD PLAN SS403-A, SHEET 1.
 $30^\circ < \alpha < 45^\circ$, USE STANDARD PLAN SS403-A, SHEET 2.
 $\alpha > 45^\circ$, USE STANDARD PLAN SS403-A, SHEET 3.
2. INSTALL HOUSE PLUMBING PER UNIFORM PLUMBING CODES, SECTION 1106.
3. ON EXISTING SEWER MAIN, INSTALL APPROVED STANDARD SADDLE. USE SEWER TAPPING MACHINE OR APPROVED EQUAL. A PLAIN END SECTION OF MAIN WITH PRE-MOLDED "Y" AND COUDER COUPLINGS MAY BE USED.
4. WHEN COVER OVER LATERAL IS 3.5' (IN PAVED STREET SECTION) A P.C.C. CAP (4" THICK) IS REQUIRED FOR TRENCH WIDTH + 6" EACH SIDE OF TRENCH ON MAINS AND LATERALS.
5. INSTALL A PREFORMED "Y" OR MANHOLE IF THE SERVICE LATERAL IS LARGER THAN 1/2" I.D. OF THE MAIN SEWER I.D.
6. NO SERVICE LATERAL PERMITTED WITHIN DRIVEWAY APRON AND FIRE LANE.
7. NO SERVICE LATERAL PERMITTED WITHIN 5--FEET OF MANHOLE.

	CITY OF SANTA PAULA - PUBLIC WORKS DEPARTMENT	STANDARD PLAN	
	SERVICE LATERAL		
	APPROVED BY: <i>Clifford G. Finley</i>	2-2-09	203
	PUBLIC WORKS DIRECTOR / CITY ENGINEER	DATE	SHEET <u>2</u> OF <u>3</u>

LATERAL



NOTES:

1. PIPE SHALL BE HIGH STRENGTH VCP OR PVC SEWER PIPE.
2. CONTRACTOR SHALL MARK A 2" HIGH "S" ON THE CURB FACE AT ALL SEWER LATERALS.
3. DEPENDING ON THE SLOPE OF THE LATERAL, THE CITY REPRESENTATIVE MAY REQUIRE CONCRETE ENCASEMENT.
4. ON EXISTING SEWER MAIN, INSTALL APPROVED STANDARD SADDLE (CUT IN WYE, STANDARD SADDLE, INSERT A TEE). USE SEWER TAPPING MACHINE OR APPROVED EQUAL. A PLAIN END SECTION OF MAIN WITH PRE-MOLDED "Y" AND COUDER COUPLINGS MAY BE USED.



CITY OF SANTA PAULA - PUBLIC WORKS DEPARTMENT

STANDARD PLAN

SERVICE LATERAL

203

APPROVED BY:

Clifford G. Finley 2-2-09
 PUBLIC WORKS DIRECTOR / CITY ENGINEER DATE

SHEET 3 OF 3